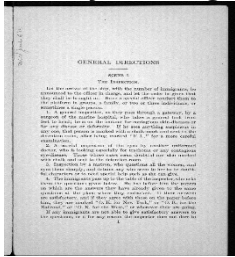


## Assessing with Primary Sources

- Grade Level:** Middle School (6-8)
- Standard(s) or Objectives:** CCSS.RI.8.3 – Identify key steps in a text’s description of a process related to history/social studies.  
 CCSS.RI 8.4 – Determine the meaning of words and phrases as they are used in a text, including figurative, connotative, and technical meanings; analyze the impact of specific word choices on meaning and tone, including analogies or allusions to other texts.

### Library of Congress Resources:



Francis E Clark (1912). *Our Immigrants at Ellis Island*. Retrieved from Library of Congress American Memory website at:  
<http://lcweb2.loc.gov/cgi-bin/ampage>

### Topic Background:

*Our Immigrants at Ellis Island* is an exercise prepared for the young people and descriptive of the reception, inspection, and experiences of our immigrants in the detention-room and Railway Offices.

Excerpted from: <http://lcweb2.loc.gov/cgi-bin/ampage>

### Source Used:

The source used for this assessment is a catalog record that includes the history of the 12 millions immigrants who enter the United States through the portal of Ellis Island.

### Multiple Choice Answer Key:

- Question 1 – C
- Question 2 – D

new

## GENERAL DIRECTIONS

### SCENE I.

#### THE INSPECTION.

Let the arrival of the ship, with the number of immigrants, be announced to the officer in charge, and let the order be given that they shall be brought in. Have a special officer conduct them to the platform in groups, a family, or two or three individuals, or sometimes a single person.

1. A general inspection, as they pass through a gateway, by a surgeon of the marine hospital, who takes a general look from feet to head; he is on the lookout for contagious skin-diseases or for any disease or deformity. If he sees anything suspicious in any one, that person is marked with a chalk-mark and sent to the detention-room, after being marked "F. I.," for a more careful examination.

2. A careful inspection of the eyes by another uniformed doctor, who is looking especially for trachoma or any contagious eye-disease. Those whose cases seem doubtful are also marked with chalk and sent to the detention-room.

3. Inspection by a matron, who questions all the women, and eyes them sharply, and detains any who seem to her to be doubtful characters or to need special help such as she can give.

4. The immigrants pass up to the table of the inspector, who asks them the questions given below. He has before him the papers on which are the answers they have already given to the same questions at the place where they embarked. If their answers are satisfactory, and if they agree with those on the paper before him, they are marked "O. K. for New York," or "O. K. for the Railroad," or "O. K. for the West," or wherever they are going.

If any immigrants are not able to give satisfactory answers to the questions, or if for any reason the inspector does not dare to

**QUESTIONS:**

1. According to the article, Immigrants went through different stages of inspection to obtain an approval to go to their final destination. Which of these sentences best explain the statement above (CCSS RI 8.3)

- A. Immigrants got to Elli Island, and they were called by officer to see their passport and travel documents.
- B. Immigrants got to Elli Island and went through a general check up to get an approval to go their final destination.
- C. Immigrants got to Elis Island and went through a series of inspections.
- D. An inspection by a matron was given to both male and female immigrant.

2. If an immigrant presents eye pain, irritation of the eye and light sensitivity, We can infer that the following diseases were present by the time of the inspection.(CCSS 8.4)

- A. The Flu
- B. Tuberculosis Bacillus
- C. Asthma
- D. Trachoma